



SpotBot™ Cellular

NEW

To solve problems
caused by:



Impacts



Temperature
variations

Your transport in real time...

Products damaged during transport? By using **SpotBot Cellular** to track cargo through the supply chain, you can pinpoint issues during transportation so that they can be remedied and avoided in the future. The visibility to impact and temperature data that **SpotBot Cellular** provides can help you realize significant savings of both time and money by ensuring that your product reaches the customer without incident.

SpotBot Cellular is a standalone device that delivers tri-axial impact monitoring, temperature recording and location tracking through cellular connectivity. It features real-time visualization through the **SpotSee** Cloud. Access your data in the cloud from any web-based device. The **SpotSee** cloud is where trip data is aggregated in real-time. The cloud features visualizations for multiple units. The graphs are easy to read and include data such as specifics of impact with locations, impacts over time, histogram, and temperature. These can have two threshold set up, high and/or low temperature: the recipients configured during the setup process of each unit will receive an alert by e-mail if one of these is exceeded. SpotSee cloud portal is accessible from anywhere if internet connection is available, and from multiple different devices in the same moment. The **SpotBot** transmits information using cellular technology, so the unit does not require line of sight to a satellite for position or communication.

Features

Best in Class Impact Data

SpotBot Cellular generates accurate data on impacts up to 65G providing more than four times (4X) the spectrum of the best competitive alternative (which captures impacts up to 16G). SpotBot Cell range of impact monitoring is best suited for products between 100-60,000 lbs.

Longest Battery Life

With off-the-shelf lithium batteries, **SpotBot Beta** delivers 190 days of monitoring, set to daily summary reporting, and 75 days, set to hourly summary reporting.

Flexible Settings & Download Capabilities

The user easily defines impact and temperature settings specific to the product being monitored and **SpotBot** will deliver a location and time stamp of alerts from conditions over the threshold. After the trip, the user can easily download a PDF file with the top ten largest impacts, a CVS file with the top 50 largest impacts, and a slot-time report from the **SpotBot**.

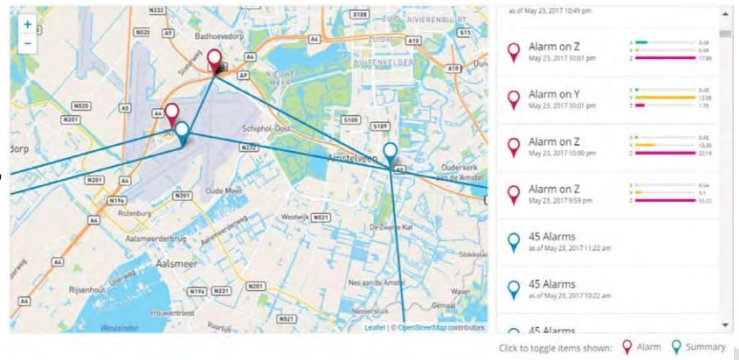




Spot Bot™
Cellular

Features

- Access to data from anywhere with a dedicated web portal
- Real-time reporting and tracking of incidents
- Alarms with location, time, impact g-level, direction of impact and temperature
- Impacts-over-time visualization of each asset
- Histogram the asset's impacts



Real-time Reporting

If an unacceptable impact on temperature condition occurs, the SpotSee Cloud receives that information in real-time (notifications can be set up to deliver alerts immediately to concerned parties). Summary information is sent to the cloud at predetermined intervals so you always know the status of your asset.

Detailed Alarm Data

See all your asset alarms including location, time, impact g-level, direction of impact and temperature. View excursions over time so you can easily spot areas of concern. The histogram is a quick view of the units impacts grouped by g-level so you know quickly if repeated impacts may be the cause of damage.



Propagroup S.p.A. Via Genova, 5/B - 10098 Rivoli (Turin) Italy
Tel +39 011 9507788 - www.propagroup.com - export@propagroup.com

Rev. 01